



ON THE ROAD

An easy-to-digest guide to driving in Spain

DRIVER'S CHECKLIST



Warning triangle

Won't work as a musical instrument



High visibility jacket

Only required if you break down - no need to spend the whole holiday in it!



Valid licence and identity card/ passport

Additional proofs of address could be requested



Spare tyre

A spare tyre is not compulsory but always useful, just in case



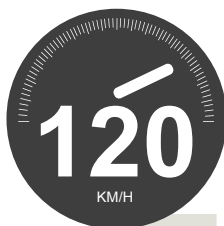
112 is the European emergency number

ES - ¡He pinchado una
rueda!
ENG - I have a flat tyre!



SPEED LIMITS

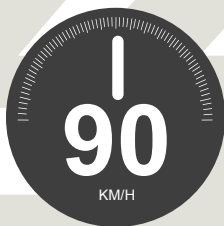
Motorways



Dual carriageways



Main roads



Built up areas



ES - Queremos ir a...

ENG - We want to go
to...

DOs

✓ Priority to traffic coming from the right

As a general rule, give priority to traffic on the right where no priority sign is posted.

✓ Buckle up

Seatbelts are compulsory in front and rear seats.

✓ Always use turn signals

The use of turn signals is strictly enforced by police when entering or changing lanes on the motorway or any other road.

✓ Drive on the right hand side

In Spain you drive on the right, even in the British territory of Gibraltar.

✓ Priority to traffic and cyclists on roundabouts

Drivers already engaged in a roundabout have priority over drivers entering a roundabout. Cyclists have priority on roundabouts from any direction.

ES – ¿Dónde están los servicios, por favor?

ENG - Where are the toilets please?

Don'ts

✘ Drink and drive

The legal limit for fully licensed drivers is 0.05mg/ml in Spain compared to 0.08mg/ml in the UK.

✘ Use of horn in built-up areas or at night

You are not allowed to sound a horn at night in urban areas. Horns should only be used in an emergency.

✘ Use speed camera detection on a sat nav

It is illegal to use sat navs to detect fixed cameras in every European nation except the UK and Hungary.

✘ Use your mobile phone

It is illegal to use a mobile phone while driving, even if you have pulled over to the side of the road. Using an earpiece is also prohibited. Only completely hands-free units are acceptable.

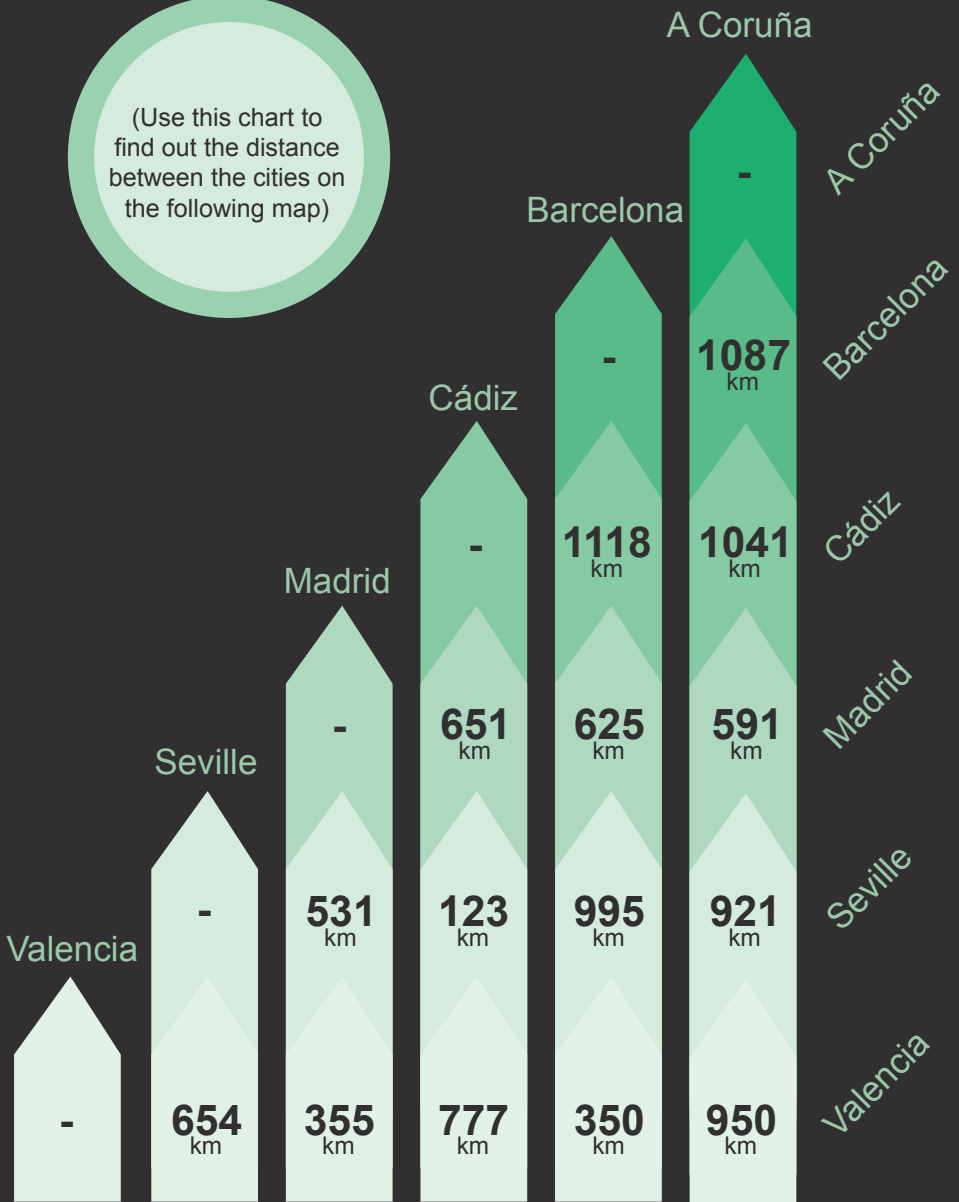
✘ Assume your rental car uses petrol

Always make sure to use the correct fuel – even the smallest cars in Spain may require diesel.

DISTANCE CHART

Distance between popular Spanish destinations

(Use this chart to find out the distance between the cities on the following map)



Disclaimer - This is only a proposed guide and not a direct reflection of driving regulations in Spain. It is the responsibility of the driver to research and understand all driving legislation.

DISCOVER THESE PLACES

How well do you know Spain?



ES - ¿Donde está la estación de servicio más cercana?

ENG - Where is the closest petrol station?

LIVE LIKE A LOCAL

Try local cuisine



Tortilla de patatas

The famous Spanish omelette that you can add anything to



Chorizo, Jamón, Lomo, Morcilla

Sample all parts of the pig!

If you're game...

Parchis

Parchis is a popular Spanish board game based on the Indian game Pachisi. It is very similar to Ludo.



Try this for a tongue twister

Pablito clavó un clavito, ¿qué clavito clavó Pablito?

Translation: Pablito nailed a nail, what nail did Pablito nail?